



The Original Sheet Door

MODEL, 211, 231, 232, 233



Standard Features:

1. Greaseless Nylon Bearings

This exclusive feature delivers longer life than metal bearings without costly maintenance.

2. Drum Assembly

The counterbalancing mechanism is housed in this unique, roll-up assembly, forming a self enclosed hood.

3. Lock Seam

The sections are lock seamed together. If one section is damaged beyond repair, it can be easily replaced.

4. Weather Seal

A blade astragal made from E.P.D.M., a highly resilient and flexible rubber compound, runs the full length of the bottom angle to seal the threshold of the opening. This forms a barrier against weather, dirt, insects, and rodents.

5. Guides

Roll formed single piece guides are standard on all Model 200 doors.

6. Chain Operation

Smooth hand-chain provides safe and comfortable operation (On models that include chain)

7. Locking Assembly

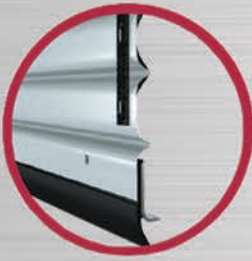
Exclusive tamper-proof slide bolt lock accommodates two padlocks for double protection.

8. Galvanneal Steel Curtain

A continuous sheet of .021" galvanneal steel delivers maximum security.

Model 200: The Original Sheet Door

Porvene's 200 Series Sheet Doors are the "Original Sheet Door", introduced into the United States in the 1960's. Its ease of operation and economical price has made it an industry standard within the construction industry. This complete product line is available, depending on size, as hand operation or chain operation and can be upgraded to electric operation.



Commercial Door Model 211
This model offers an economical price without sacrificing superior performance. Porvene's exclusive Nylofelt side strip prevents metal to metal contact and eliminates the need to lubricate the door guides.



Industrial Door Model 231
This model incorporates a structural steel bottom angle and heavier gauge steel guides. Larger sizes include wide steel band side strip for added strength, a Porvene exclusive.

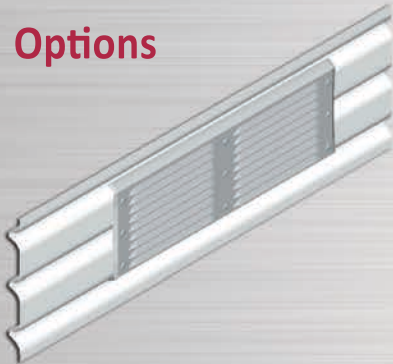


Insulated Door Model 232
This model offers a factory applied Mylar backed insulation which provides an insulating value of R-5.24 and U-0.191, and includes a top and side draft stop.



Windlocked Model 233
This model is manufactured for use in high wind areas. The Porvene Windlock System is designed to meet windload ratings up to 60 P.S.F. (150 mph).

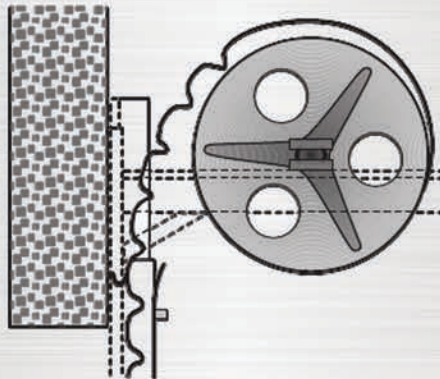
Options



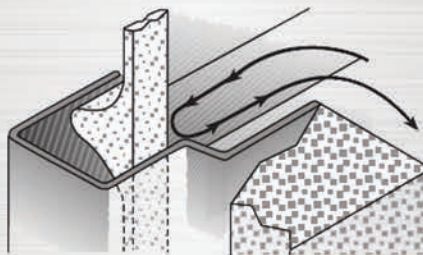
Vents: For air circulation



Vision Lites: For viewing convenience
Lexan® window 22" wide x 7 1/2" high



Top Draft Stop: Made of resilient rubber to insure a tight seal at the header



Side Draft Stop: To help prevent wind and weather from penetrating the side jambs of the opening



Wicket Door For personal access and added efficiency and convenience

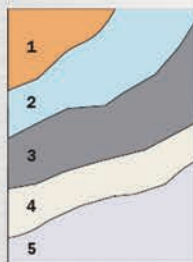
Option: Panic Hardware

Other Options:

Reversed curtain for exterior mounting
Slope strip (for sloped floors)
Available in tan or brown
Hoods/fascia panels
Contact factory for other available options

Dura-Finish Paint Process

The Porvene process is designed to give a longer life with less maintenance and much better protection against the elements such as weather and dust. Our method produces one of the best systems in our industry for a longer lasting and more maintenance free finish. Our system produces one of the thickest top coat finishes in our industry.



1. Strip steel as per ASTM A-653.
2. Hot dip galvanized G60 coating per ASTM A-653.
3. Bonded for prime coat adhesion.
4. Corrosion inhibiting primer-minimum thickness (.2) mils on each side.
5. Dura finish (white polyester top coat thickness 1.0 mil front side, .5 mil back side.)

